



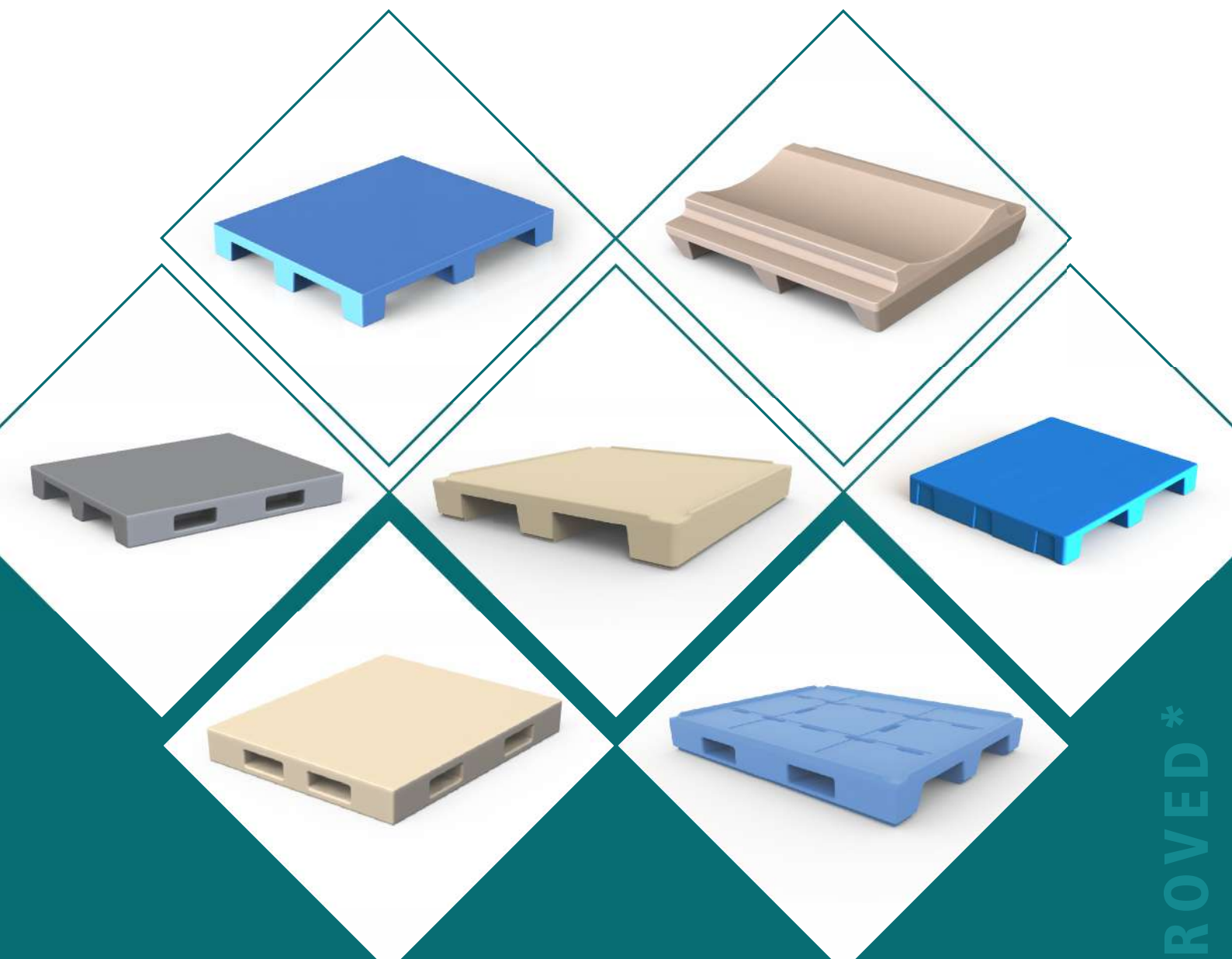
An ISO 9001 Certified Company

SINCE 1996

SeaplastTM
India

Born in Iceland

www.seaplastindia.com



Roto Moulded Pallets

EU/FDA APPROVED*

Roto Moulded Pallets

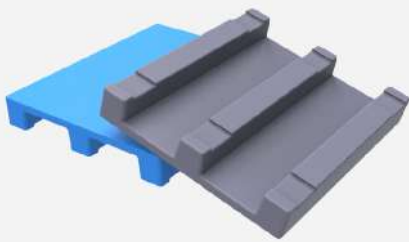
Plastic pallet features

- Durable with longer life span
- Bacterial and odour free
- Easy cleaning and hygienic
- Can be Steel reinforced for extra strength and load bearing capacity
- Reusable many times
- Food grade material and direct food contact
- Non porous construction
- Can withstand temperature between -50 to +100 degree Celsius
- High impact resistance

Pallets provide effective and economical storage/transportation of goods and commodities. They also help in achieving tidy and clean workplace.

- One piece product without joints
- Chemical and heat resistance
- Moisture, termites and corrosion proof
- Custom design possible
- Easy to handle with forklift or pallet jack
- Ventilated or Plain Top
- Can be sterilised with hot water, steam and water jet

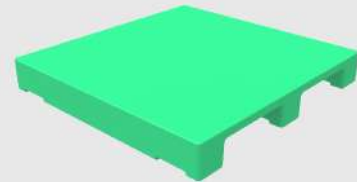
PU PALLET LIST



SI-1012-PTPS3L2W

Size in mm

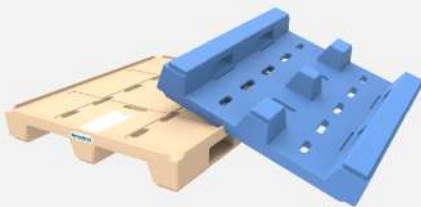
Model Name	SI-1012-PTPS3L2W		
Dimensions (LWH)	1000x1200x160		
Description	Plain Top, Puff and Steel, 3 Leg, 2 Way Entry (3 Runner) with Rack Lock		
Fork Entry Side	1000		
Load	Static	Dynamic	Racking
	✓	✓	✓



SI-1212-PTPS3L2W

Size in mm

Model Name	SI-1212-PTPS3L2W		
Dimensions (LWH)	1200x1200x160		
Description	Plain Top, Puff and Steel, 3Leg, 2 Way Entry (3 Runner) with Rack Lock		
Fork Entry Side	1200		
Load	Static	Dynamic	Racking
	✓	✓	✓



SI-1012-VEPS3L2E

Size in mm

Model Name	SI-1012-VEPS3L2E		
Dimensions (LWH)	1000x1200x165		
Description	Ventilated Top with Side Edges, Puff and Steel, 3 Leg, 2 Way Euro Entry		
Fork Entry Side	1000		
Load	Static	Dynamic	Racking
	✓	✓	✓



SI-1212-PEPS3L2W

Size in mm

Model Name	SI-1212-PEPS3L2W		
Dimensions (LWH)	1200x1200x177		
Description	Plain Top with Side Edges, Puff and Steel, 3 Leg, Two way Entry		
Fork Entry Side	1200		
Load	Static	Dynamic	Racking
	✓	✓	✓



SI-8012-PTPS3L2W

Size in mm

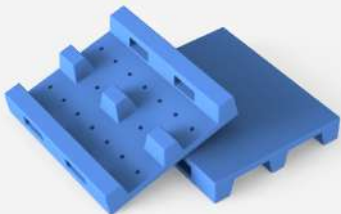
Model Name	SI-8012-PTPS3L2W		
Dimensions (LWH)	800x1200x150		
Description	Plain Top, Puff and Steel, 3 Leg, 2 Way Entry(3 Runner) with Rack Lock		
Fork Entry Side	800		
Load	Static	Dynamic	Racking
	✓	✓	✓



SI-1012-PTPS9L4W

Size in mm

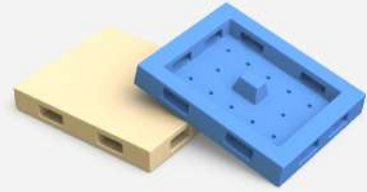
Model Name	SI-1012-PTPS9L4W		
Dimensions (LWH)	1000x1200x150		
Description	Plain Top, Puff and Steel, 9 Leg, 4 Way Entry		
Fork Entry Side	ALL SIDE		
Load	Static	Dynamic	Racking
	✓	✓	✗



SI-1012-PTPS3L2E

Size in mm

Model Name	SI-1012-PTPS3L2E		
Dimensions (LWH)	1000x1200x165		
Description	Plain Top, Puff and Steel, 3 Leg, 2 Way Euro Entry		
Fork Entry Side	ALL SIDE		
Load	Static	Dynamic	Racking
	✓	✓	✗



SI-1210-PTPS4L4E

Size in mm

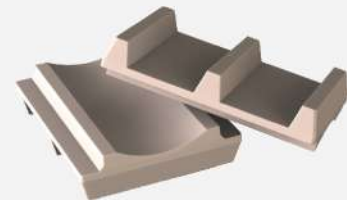
Model Name	SI-1210-PTPS4L4E		
Dimensions (LWH)	1200x1000x150		
Description	Plain Top, Puff and Steel, 4 Leg, Four way Euro Entry		
Fork Entry Side	ALL SIDE		
Load	Static	Dynamic	Racking
	✓	✓	✓



SI-1210-PTPS3L2W

Size in mm

Model Name	SI-1210-PTPS3L2W		
Dimensions (LWH)	1200x1000x150		
Description	Plain Top, Puff and Steel, 3 Leg, Two way Entry		
Fork Entry Side	1200		
Load	Static	Dynamic	Racking
	✓	✓	✓

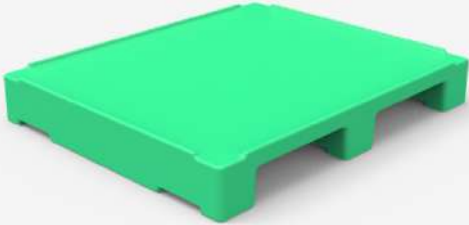


SI-1209-RTPS3L2W

Size in mm

Model Name	SI-1209-RTPS3L2W		
Dimensions (LWH)	1200x900x225		
Description	Round Top, Puff Steel, 3 Leg, 2 Way Entry		
Fork Entry Side	ALL SIDE		
Load	Static	Dynamic	Racking
	✓	✓	✗

NON PU PALLET LIST



SI-1210-PTPS3L2W

Size in mm

Model Name	SI-1210-PTPS3L2W		
Dimensions (LWH)	1200x1000x172		
Description	Plain Top, Puff and Steel, 3 Leg, 2 Way Entry(3 Runner) with Rack Lock		
Fork Entry Side	1200		
Load	Static	Dynamic	Racking
	✓	✓	✓



SI-1012-ASSR3L2W

Size in mm

Model Name	SI-1012-ASSR3L2W		
Dimensions (LWH)	1000x1200x150		
Description	Anti Skid Steel Reinforcement, 3 Leg, 2 Way Entry with Rack Lock		
Fork Entry Side	1000		
Load	Static	Dynamic	Racking
	✓	✓	✓



SI-1212-ASSR3L2W

Size in mm

Model Name	SI-1212-ASSR3L2W		
Dimensions (LWH)	1200x1200x150		
Description	Anti Skid, Steel Reinforcement, 3 Leg, 2 Way Entry with Rack Lock		
Fork Entry Side	1200		
Load	Static	Dynamic	Racking
	✓	✓	✓



SI-1012-ASSR9L4W

Size in mm

Model Name	SI-1012-ASSR9L4W		
Dimensions (LWH)	1000x1200x150		
Description	Anti Skid, Steel Reinforcement, 9 Leg, 4 Way Entry		
Fork Entry Side	ALL SIDE		
Load	Static	Dynamic	Racking
	✓	✓	✗



SI-1212-ASSR9L4W

Size in mm

Model Name	SI-1212-ASSR9L4W		
Dimensions (LWH)	1000x1200x150		
Description	Anti Skid, Steel Reinforcement, 9 Leg, 4 Way Entry		
Fork Entry Side	ALL SIDE		
Load	Static	Dynamic	Racking
	✓	✓	✗

Dealer/Distributor

Promens (India) Pvt Ltd

Office: B/402, Dev Aurum Commercial Complex, Anandnagar Cross Road, Prahladnagar Ahmedabad - 380 015, Gujarat, India. CIN No: U25201GJ1996PTC031114

☎ +91 79 4007 3880 🖨 +91 79 4007 3885 ✉ sales@seaplastindia.com

Factory: Survey No: 1658, B/H Gayatri Temple, B/H Rajpura Bus Stop, Gandhinagar-Mansa Road, Mansa-382 845, Gujarat, India. ☎ +91 2763 272873 / 271833

